

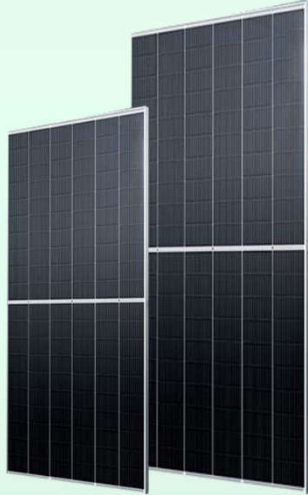
## ULTIMATE Series

### Monocrystalline PERC Cell



25 Years Guarantee

GRADE  
A  
QUALITY



certificate



#### High Efficiency

Advanced solar cell technology ensures, The high module efficiency up to 21.3%.



#### Positive Tolerance

Module guarantees a positive -only power tolerance of 0 to +5w to bring extra benefit.



#### Strong Load Capacity

Module is capable to withstand 2400Pa wind loads and 5400Pa Snow loads.



#### Reliable quality

Module is manufactured in accordance with international quality standards ISO9001



#### Higher Weatherproof Rating

J-Box performs module with an environmental protection rating to IP68.



#### Salt and Corrosion Resistant

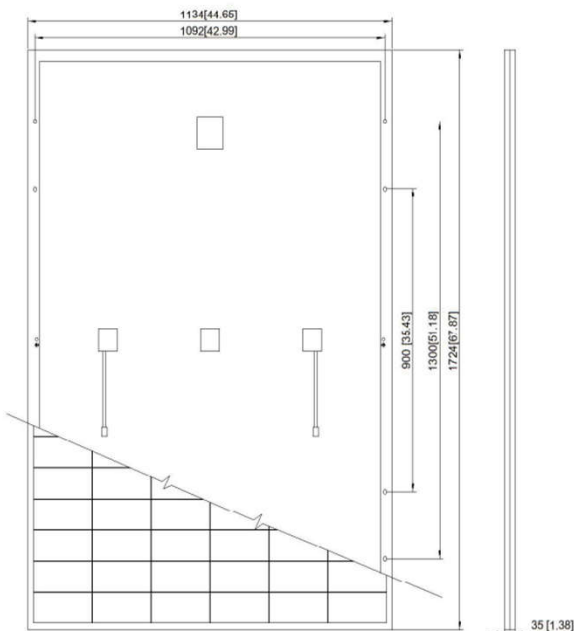
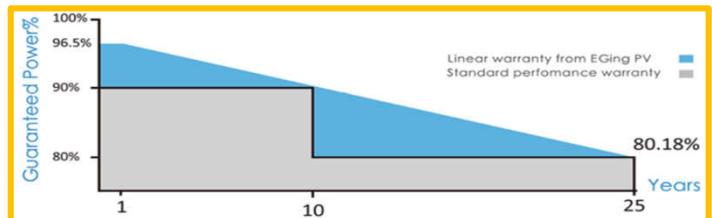
Highly Certified conform in higher salinity zone



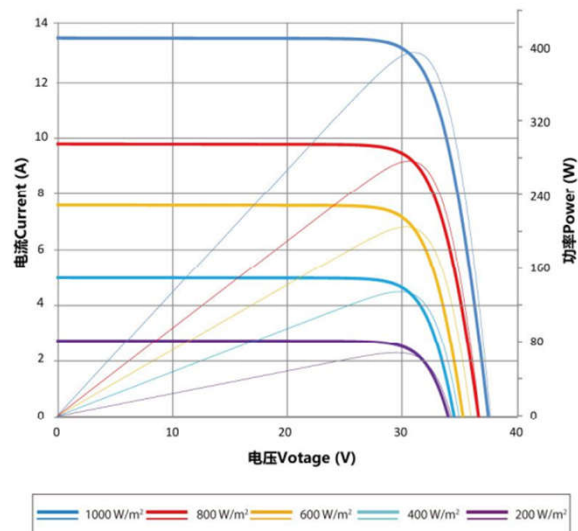
#### Anti PID Solar Technology

Highly PID resistant in larger humidity areas

380 / 385 / 390 / 395 / 400



#### Current-Voltage & Power-Voltage Curve (GEP-IfMc400M)



## Electrical Characteristics

(STC)	GEP-Af 405M	GEP-Af 400M	GEP-Af 395M	GEP-Af 390M	GEP-Af 385M
	GEP-Af 405MH	GEP-Af 400MH	GEP-Af 395MH	GEP-Af 390MH	GEP-Af 385MH
Maximum Power (Pmax)	405W	400W	395W	390W	385W
Tolerance of power	0/+5W	0/+5W	0/+5W	0/+5W	0/+5W
Maximum Power Voltage (Vmp)	31.52V	31.28V	31.03V	30.79V	30.54V
Maximum Power Current(Imp)	12.85A	12.79A	12.73A	12.67.A	12.61A
Open Circuit Voltage (Voc)	37.42V	37.18V	36.93V	36.9V	36.44V
Short Circuit Current (Isc)	13.60A	13.54A	13.48A	13.42A	13.36A
Module Efficiency	20.7%	20.5%	20.2%	20.0%	19.7%
Operating module Temperature	- 40°Cto +85°C				
Maximum system(DC) Voltage	1000V/1500V(IEC)				
Series Fuse Rating	15A				
NOCT*	45±2°C				
Temperature Coefficients of Pmax	- 0.410%/°C				
Temperature Coefficients of Voc	- 0.340%/°C				
Temperature Coefficients of Isc	+ 0.060%/°C				

## MECHANICAL CHARACTERISTICS

Solar Cell	Monocrystalline 182×91mm 10BB
Number of cells	144 ( 6×24 )
Dimensions	1724×1134×35mm
Weight	20.40Kg
Front Glass	3.2mm (0.13 inches) Tempered front glass
Frame	Aanodized aluminum alloy (Black)
Junction Box	IP68 rated
Cable	4mm <sup>2</sup> Solar Cable 300mm (Customized Length)
Connector	MC4 PV-XT101.1/Z4S- ABCDE

## PACKING CONFIGURATION

	20GP	40GP
Pieces per pallet	31	31
pallets per container	12	26
Pieces per container	372	806

### NOTE:

- 1.Design and specifications are subject to change without based on customer's requirements.
- 2.Refer to the installation and operating manual or contact Green energy power Renewable for detailed information on approved installation and use of this product.