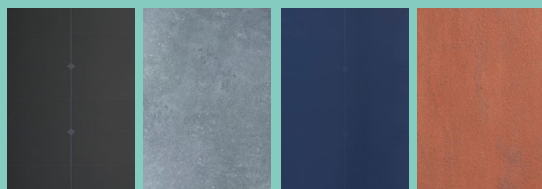


Product Parameters

Product Components	Double glass 3.2mm+ battery pack+3.2mm
Battery type	Monocrystalline Silicon
Appearance size	600mmx600mm
Effective size	576mmx576mm
weight/piece	6.2kg
Quantity/m ²	3.01pcs/m ²
Max rated power(Pmax)	55W±3%
Operating voltage(vmpp)	10.75V
Operating Current(lmpp)	5.12A
Open circuit voltage (Voc)	12.55V±3%
short-circuit current(Isc)	5.55A±4%
Operating Temperature	-45°C ~ 85°C

Product color

The color can be customized

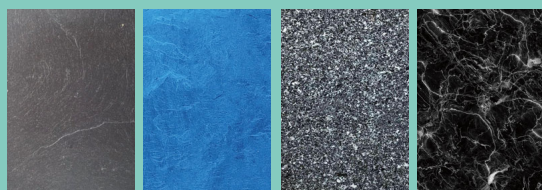


Dark gray

Light gray

Dark blue

Clay red



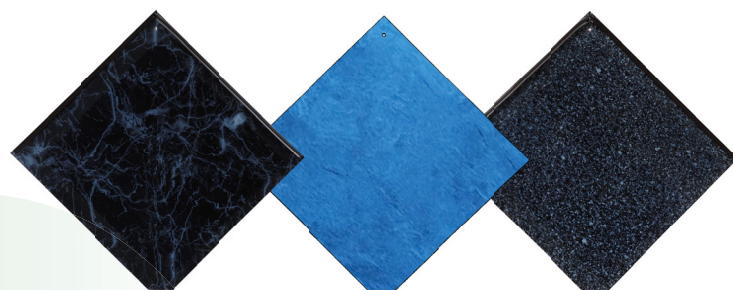
Slate gray

Ocean blue

Granite gray

Marble black

KVS03-晶菱



Adaptability

Suitable for various roofs,
curved roofs, and domes

Easy installation

Metal corner protector mode
Single piece independent
disassembly

Beautiful appearance

Diverse shapes and rich
variations
Overall presentation of scale
effect

Special Waterproof design

Add rubber strips at the
overlap,
Waterproof and stable



+86 18910125288(Mr. Li)
+86 13918414663(Ms. Liu)



Lizhi@kunvosolar.com
Ramona@kunvosolar.com



Room 1801, Tower 1C, Wangjing
Soho,10 Wangjing Street, Chaoyang
District, Beijing, P.R.C



www.kunvosolar.com