

182N-Type

23.0%

Maximum Efficiency

450W

Maximum Power Output

ET-N754TBHXXXGL/GB

XXX:Power Output Range 430-450W



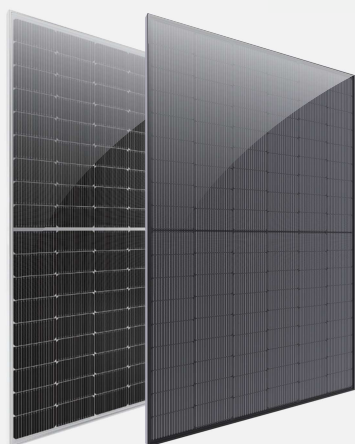
Linear power
output warranty



Guarantee on product
material and workmanship

The module picture is for reference only

Product Features



Modern Appearance
Sleek black design crafted for enhanced aesthetics and seamless integration into buildings.



Increased module conversion efficiency
Module efficiency up to 23.0% achieved through advanced cell technology and manufacturing processes.



Zero LID(Light Induced Degradation)
N-type solar cells inherently lack Light Induced Degradation (LID), thereby enhancing power output.



Enhanced Low-Light Performance Response
Enhanced performance in low-light conditions, ensuring superior power output even amidst cloudy or foggy weather.

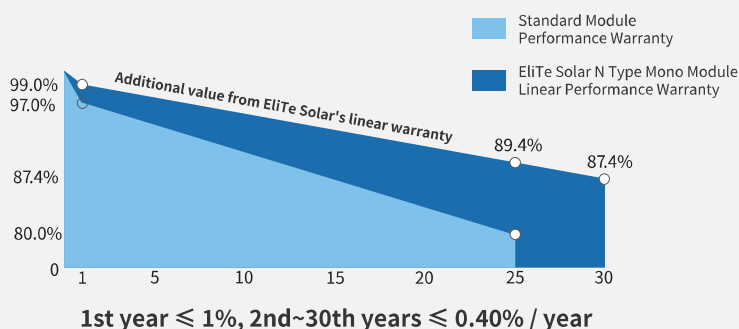


Enhanced Versatility
Smaller size optimized for irregular and complex terrain.



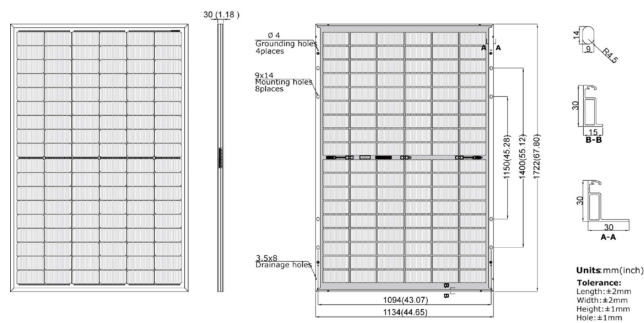
IEC61215
IEC61730
UL61215
UL61730

About warranty

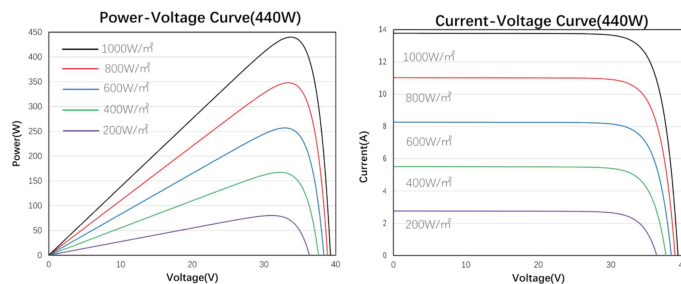


PHYSICAL CHARACTERISTICS

Unit:mm/inch



CURVE



ELECTRICAL SPECIFICATIONS

STC : AM1.5 1000W/m² 25°C. NOCT : AM1.5 800W/m² 20°C 1m/s.

Module Type	ET-N754TBH430GL/GB		ET-N754TBH435GL/GB		ET-N754TBH440GL/GB		ET-N754TBH445GL/GB		ET-N754TBH450GL/GB	
STC/NOCT	STC	NOCT	STC	NOCT	STC	NOCT	STC	NOCT	STC	NOCT
Maximum Power -P _{mp} (W)	430	323	435	327	440	331	445	335	450	338
Open Circuit Voltage -V _{oc} (V)	38.86	36.92	39.06	37.11	39.26	37.30	39.46	37.49	39.66	37.68
Short Circuit Current -I _{sc} (A)	13.65	11.02	13.72	11.07	13.78	11.12	13.84	11.17	13.90	11.22
Maximum Power Voltage -V _{mp} (V)	33.39	31.43	33.55	31.57	33.73	31.74	33.90	31.91	34.08	32.07
Maximum Power Current -I _{mp} (A)	12.88	10.28	12.97	10.36	13.05	10.43	13.13	10.50	13.21	10.54
Module Efficiency STC-η _m (%)	22.0%		22.3%		22.5%		22.8%		23.0%	
Power Tolerance(W)	0-+3%									
Pmax Temperature Coefficient	-0.30%/°C									
Voc Temperature Coefficient	-0.22%/°C									
Isc Temperature Coefficient	+0.042%/°C									
Fire Performance	Type 29(UL)									

REAR SIDE POWER GAIN (ET-N754TBH440GL)

Power Gain	10%	15%	20%	25%
Maximum Power -P _{mp} (W)	484	506	528	550
Open Circuit Voltage -V _{oc} (V)	39.26	39.26	39.26	39.26
Short Circuit Current -I _{sc} (A)	14.99	15.68	16.36	17.04
Maximum Power Voltage -V _{mp} (V)	33.73	33.73	33.73	33.73
Maximum Power Current -I _{mp} (A)	14.35	15.00	15.66	16.31

MECHANICAL SPECIFICATIONS

External Dimension	1722 x 1134 x 30mm 67.80 x 44.65 x 1.18inch
Weight	24kg/52.91lbs
Solar Cells	N-Type Mono-crystalline(108pcs)
Front Glass/Back Glass	2.0mm/2.0mm(0.08inch)
Frame	Anodized aluminium alloy
Junction Box	IP68, 3 diodes
Cable Length	4.0 mm²(12AWG), Portrait:200mm(+)/400mm(-); Or customized
Connector	MC4 Compatible
Power Bifaciality*	80%±10%

APPLICATION CONDITIONS

Maximum System Voltage	1500VDC
Maximum Series Fuse Rating	30A
Operating Temperature	-40~+85 °C
Nominal Operating Cell Temperature	45±2 °C
Mechanical Load	5400Pa/2400Pa

PACKING MANNER

Container	40' HQ
Pieces per Pallet	36
Size of packing (mm/inch)	1760*1130*1264/69.29*44.49*49.76
Weight of packing (kg/lbs)	903/1990.77
Pieces per Container (Normal/Weight-limited area)	936/756

Please contact info@elite-solar.com for technical support. This parameter is for reference only and it is not a part of the contracts. The specifications are subject to change without prior notice.