




Good Strength / Easy Installation /
OEM / Steady and Safety / UL Tested / CE Certified




Good strength




Easy Installation




OEM



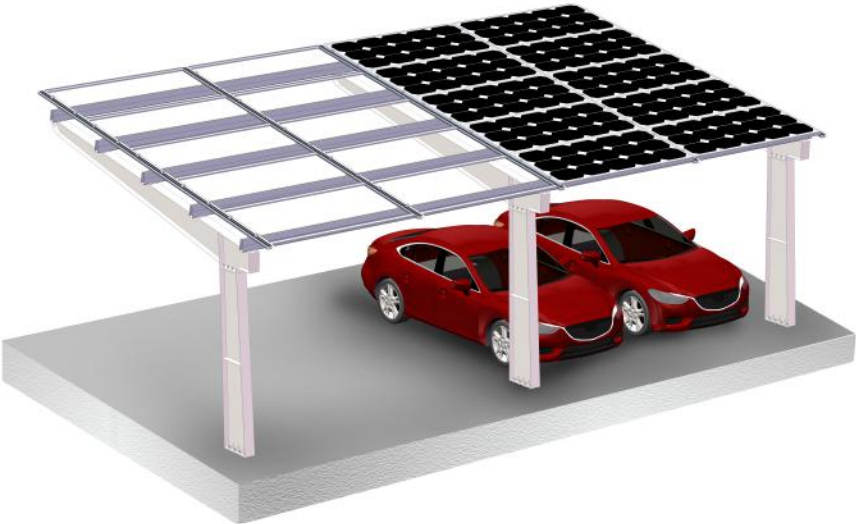
Steady and Safety



UL Tested



CE Certified



CL-03

TECHNICAL DATA

| Steel BIPV Waterproof Carport System CL-03 | |
|---|---|
| Application Parking Lot, Walkway, Entrance | Foundation Anchored into Concrete Block |
| Tilt Angles 5°-15° | Module Orientation Portrait, Landscape |
| Ground Clearance 2000mm - 4000mm | Span Length 2500mm~5500mm |
| Material | Aluminium EN AW-6005 T5 Q235 Steel Galvanized With 80μ Thickness Fasteners A2 Quality Stainless Steel 304 |
| Standard | Japan JIS C 8955:2011 ASCE 7-10 Malaysian Standard 1553-2002 BS EN 1991-1-4-2005 |

| Tests | Bonding Path Resistance Test |
|-----------------|-------------------------------------|
| Standard/Clause | UL 2703:2015 Ed.1+R:24Mar2021 Cl.13 |

| Tests | Bonding Conductor Test |
|-----------------|-------------------------------------|
| Standard/Clause | UL 2703:2015 Ed.1+R:24Mar2021 Cl.22 |

YEARS
12
WARRANTY

YEARS
25
SERVICE LIFE

Application:



Parking Lot

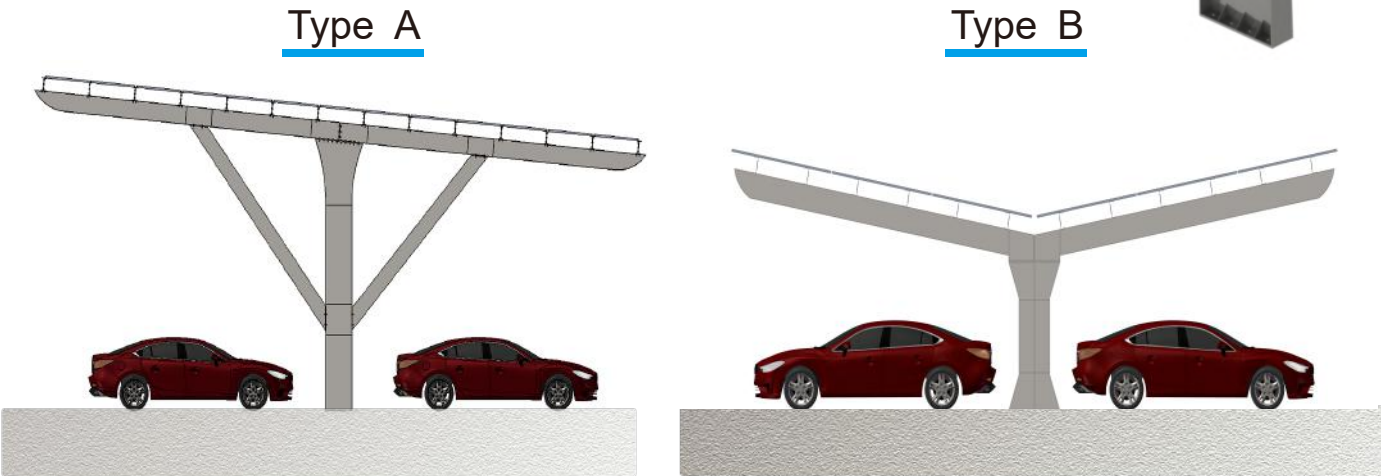
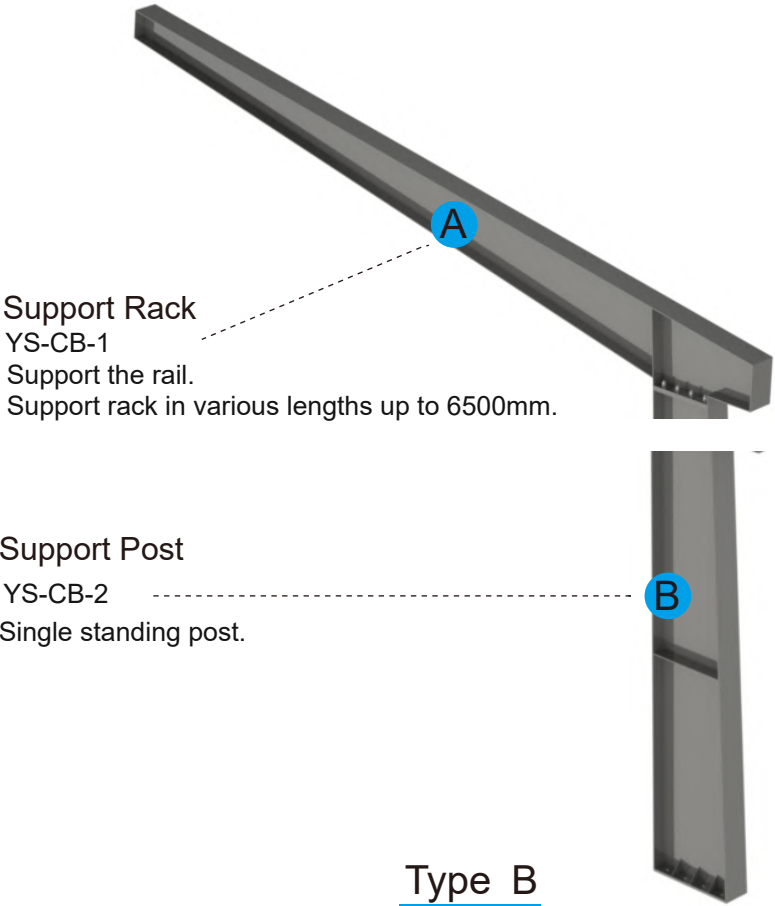


Walkway



Entrance

Structure Details



Support rack in various lengths up to 7000mm each side.

