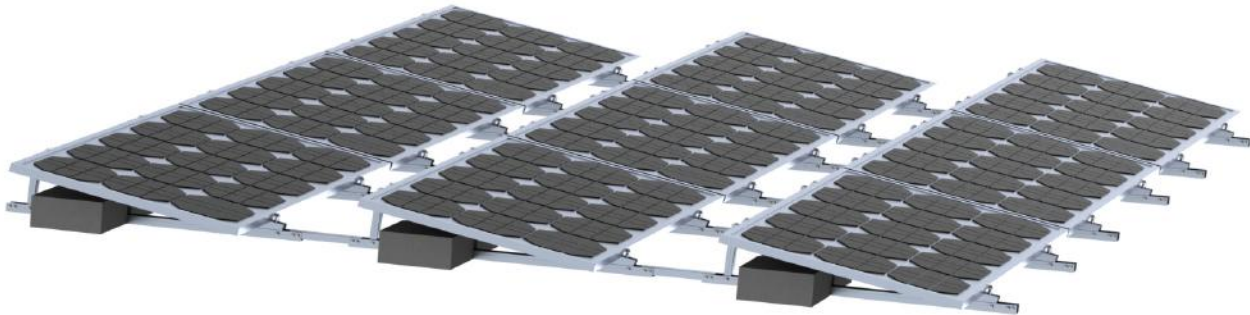


Pre-assembly / Ballast-Optimized System
Easy Installation / Simple Components / CE Certified



TP-2 (Flat Roof)

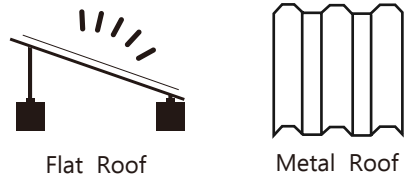


TECHNICAL DATA

Ballast System TP-2	
Application Flat Roof≤5°Concrete, Gravelled or Green Roofs. Trapezoidal Sheet Metal Roofs	Fastening Type Ballasted With Concrete Blocks Fastened Directly Into The Metal Roof
Module Frame Height 25-50mm	Module Orientation Portrait, Landscape
Inclination	10-15deg, 15-30deg, 25-45deg or Customized
Material	Aluminium EN AW-6005 T5 With 12-15um Anodization For Anti-Corrosion Fasteners A2 Quality Stainless Steel 304/410
Standard	Japan JIS C 8955:2011 ASCE 7-10 Malaysian Standard 1553-2002 BS EN 1991-1-4:2005



Application:



GROUNDING PARTS

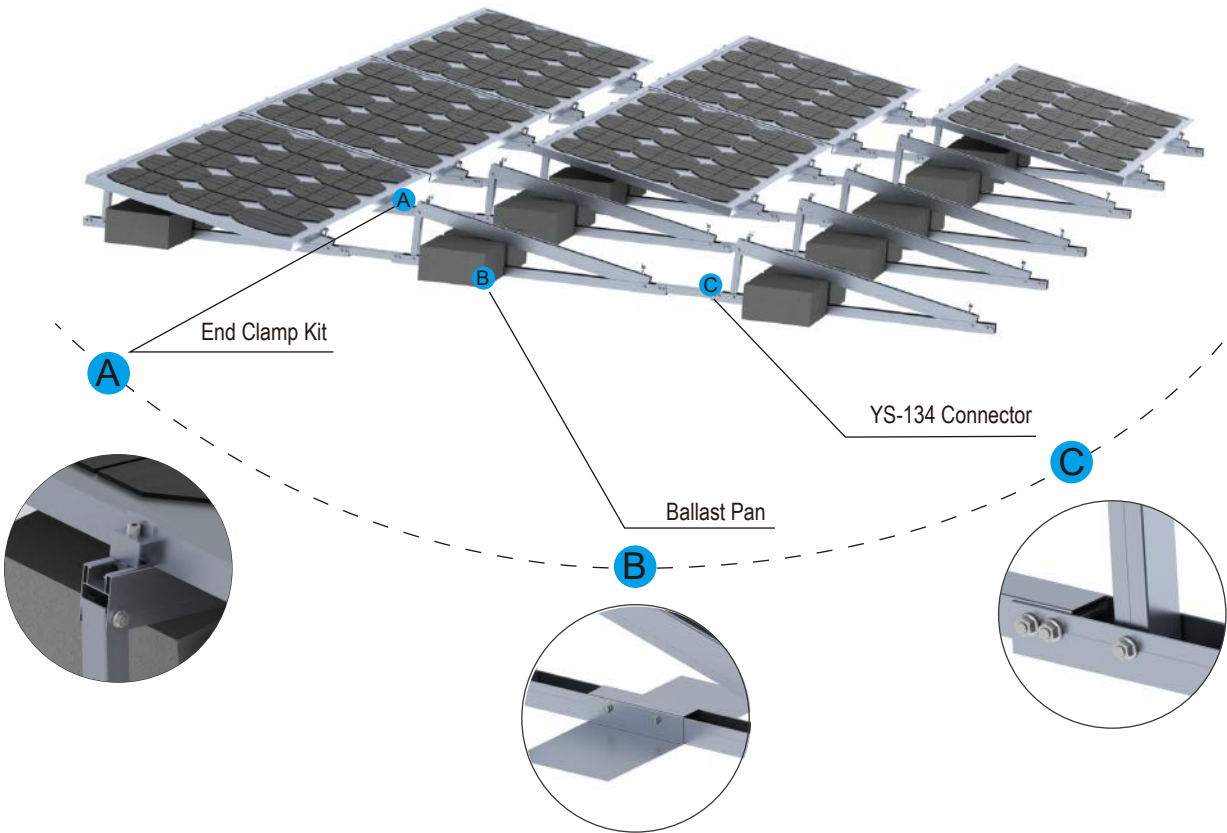
Grounding Lug
YS-GL-Z : For electricity conductive.



Grounding Washer
YS-GW-04: Pierce anodization coating through its teeth for electricity conductive.



Structure Details



Side View



Metal Roof Application

