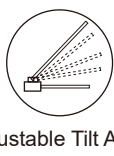
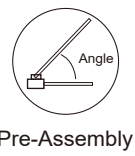
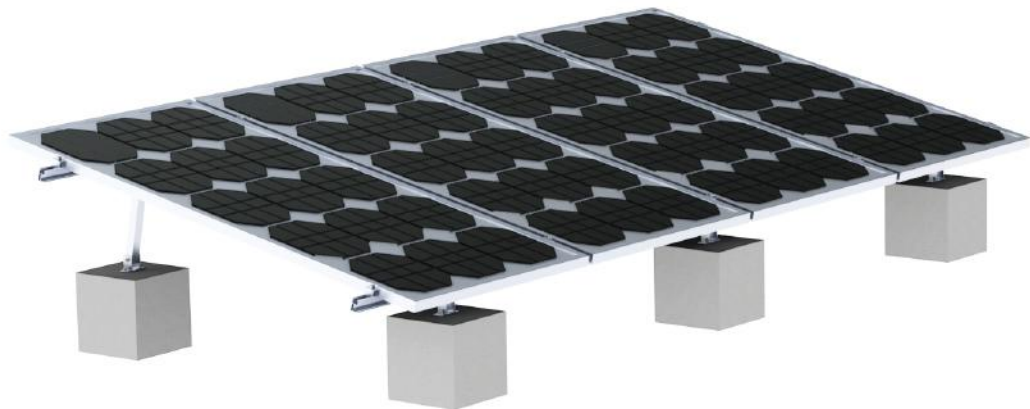


Available For Flat Roof & Sloping Metal Roof/  
Highly Pre-Assembly / Simple & Quick Installation /  
Adjustable Tilt Angle / CE Certified



## TP-4 (Flat Roof)



### TECHNICAL DATA

#### RCC Flat Roof System TP-4

##### Application

Flat roofs≤5°Concrete,  
Gravelled or Green Roofs  
Trapezoidal Sheet Metal Roofs

##### Fastening Type

Expansion Bolt M8x80mm  
Self-tapping Screw 6.3x80mm

##### Module Frame Height

25-50mm

##### Module Orientation

Portrait, Landscape

##### Inclination

10-15deg, 15-30deg, 25-45deg  
or Customized

##### Material

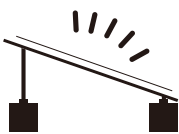
Aluminium EN AW-6005 T5  
With 12-15um Anodization For Anti-Corrosion  
Fasteners A2 Quality Stainless Steel 304/410

##### Standard

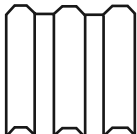
Japan JIS C 8955:2011  
ASCE 7-10  
Malaysian Standard 1553-2002  
BS EN 1991-1-4:2005



#### Application:



Flat Roof



Metal Roof

### GROUNDING PARTS

#### Grounding Lug

YS-GL-Z : For electricity conductive.

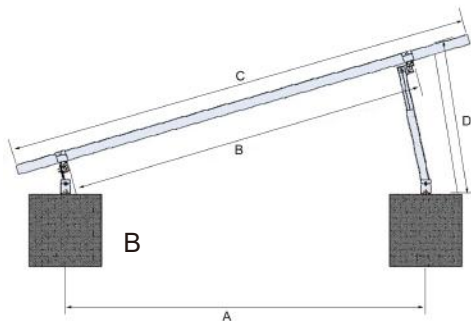
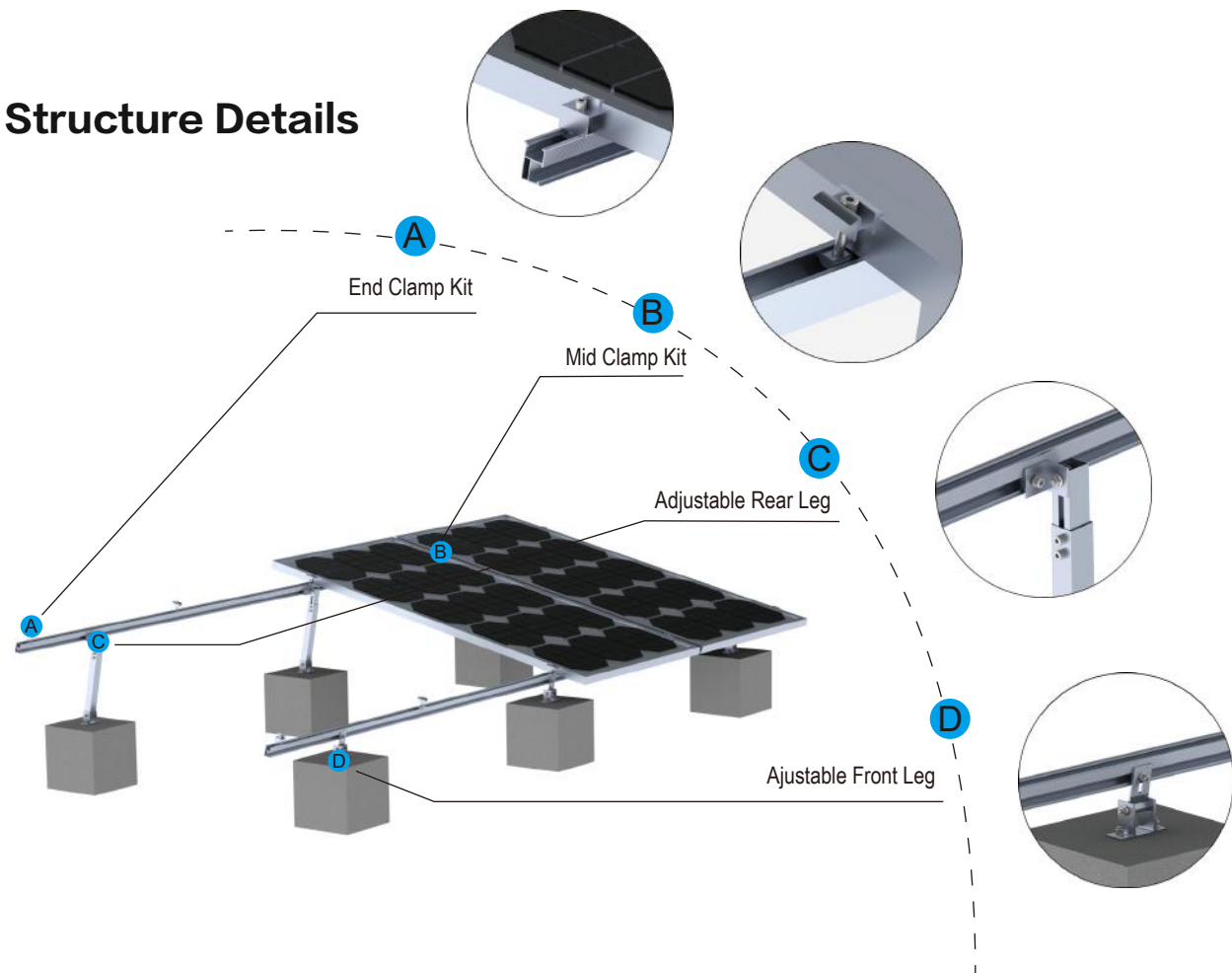


#### Grounding Washer

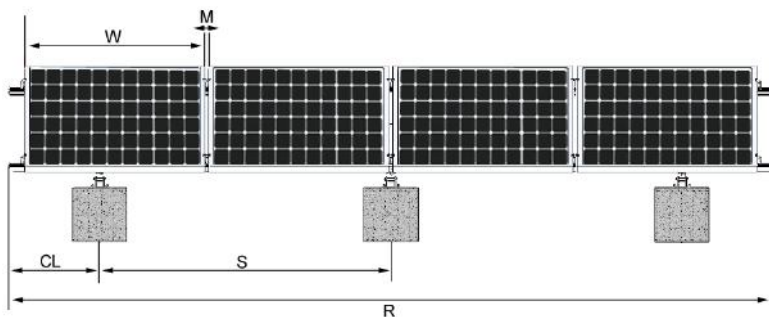
YS-GW-04: Pierce anodization  
coating through its teeth for  
electricity conductive.



### Structure Details



Side View



Front View

### Structure Introduction

- A. Front and Rear space: 1200-1500mm
- B. Similar as "A"
- C. Module Length
- D. Adjustable Rear Leg: 10-15deg, 15-30deg, 25-45deg or Customized
- W. Width of Module
- M. Gaps of Mid Clamp
- S. Spacing of adjacent legs depends on static requirements like wind load and snow load
- R. Rail Total Length
- CL. Cantilever Length