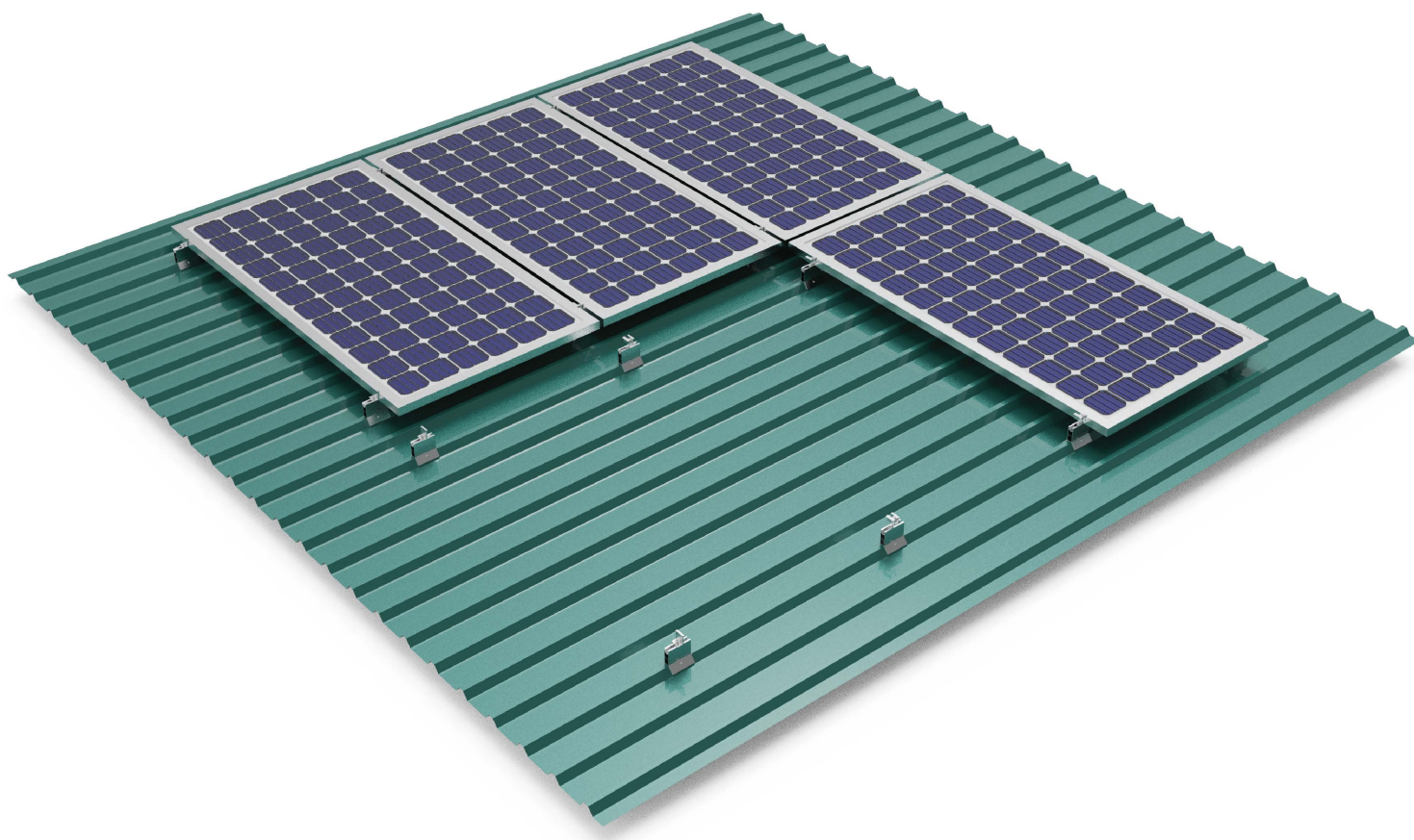


# TRAPEZOIDAL MINI-RAIL SYSTEM



This robust solution is the perfect answer to your trapezoidal sheet mounting needs. The unique clamping on the crown mechanism effectively converts pull-out forces into shear forces, granting it exceptional clamping strength compared to top-down attachments, making it highly resistant against wind uplifts. Additionally, the side clamping feature ensures superior thread engagement and stripping torque capacity, further enhancing the system's strength and stability. We are in the process of developing an even more optimised version for enhanced usability and convenience.



## Highlights:

- 5x more pull-out capacity than dop-down joints
- No swarf generation, minimal sheet damage
- Optimum load distribution on trapezoidal sheet
- Fewer components - quick & easy installation
- Efficient space utilization

## General Guidelines:

- Suitable for sheet thickness  $\geq 0.45\text{mm}$  (Steel)  
 $\geq 0.55\text{mm}$  (Aluminium)
- Suitable crown angle  $\geq 75^\circ$   
 $\leq 85^\circ$
- Flush area surrounding the bore hole:  $\geq 20\text{ mm}$
- Use EPDM for leakage & electrostatic prevention



Adjustable Clamp\*

### Mini Rail Dimensions:

Height: 70 mm (crest)  
Length: 100 mm

### Raw Material Used:

Aluminium 6063 T6  
SS 304

Available in Anodized/Non-Anodized finishes