

## PV surge protective device User manual

### Product Introduction

This DC surge protective device is protect against DC power line system and other equipment from over voltage and instantaneous over voltage damage. Widely used in photovoltaic combiner box, power inverter, DC distribution cabinet etc. It has advantages of large discharge current, fast respond time, low residual voltage.

### Features

1. Plug-in type surge protective device
2. Visible window, green means normal, red means fault
3. Double protection of fusing and over-current
4. Remote signal interface that realize remote control

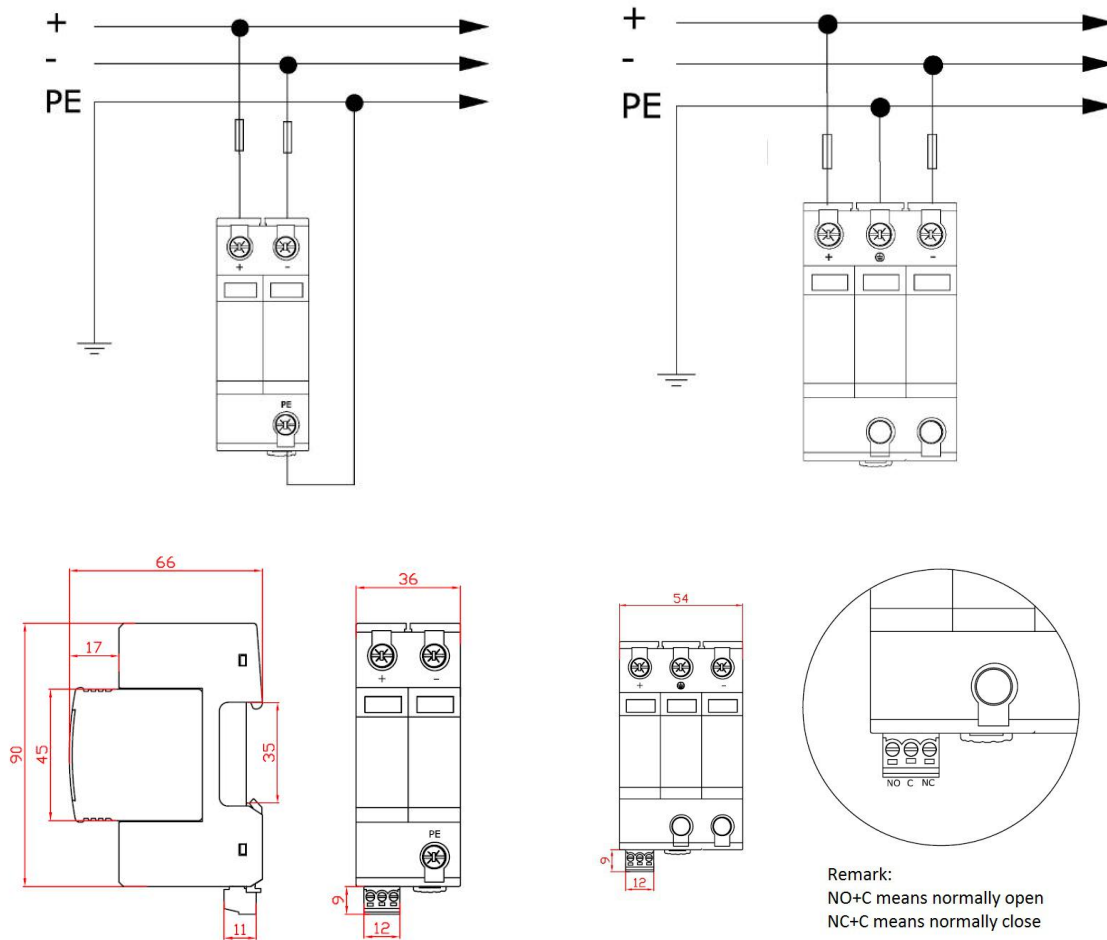
### Technical Parameter

Model						
Maximum Continuous Operating Voltage $U_c$	500V DC	800V DC	1000V DC	1200V DC	1500V DC	1800V DC
Nominal Discharge Current (8/20 $\mu$ s)	20KA					
Maximum Discharge Current(8/20 $\mu$ s)	40KA					
Poles	2P	3P	3P	3P	3P	3P
Voltage Protection Level Up	$\leq 1.8KV$	$\leq 2.9KV$	$\leq 3.6KV$	$\leq 3.8KV$	$\leq 4.2KV$	$\leq 6.8KV$
Response Time $t_A$	$\leq 25ns$	$\leq 25ns$	$\leq 25ns$	$\leq 25ns$	$\leq 25ns$	$\leq 25ns$
Indication Method	Visible window, Green=normal, Red=fault					
Min. sectional area of incoming wire L/N	4mm <sup>2</sup>	4mm <sup>2</sup>	4mm <sup>2</sup>	4mm <sup>2</sup>	4mm <sup>2</sup>	4mm <sup>2</sup>
Min. sectional area of incoming ground wire PE	6mm <sup>2</sup>	6mm <sup>2</sup>	6mm <sup>2</sup>	6mm <sup>2</sup>	6mm <sup>2</sup>	6mm <sup>2</sup>
Method of Installation	35mm Din Rail					
Material of Shell	PBT					
Protection Level of Outer Shell	IP20					
Working Temperature	-25 -+70℃					

## Installation

1. Do power off when connect surge protection device to system.
2. Ground wire should be as short, straight and thick as possible to reduce the influence of distributed inductance on lightning discharge.
3. No need special maintenance. When surge protector happens fault, equipment connected to remote signal will send alarm, then power off and change new spd module is fine.

## Dimension and wiring Diagram



## Remark:

Customers can connect signal light or buzzer with this remote signal, when signal light on or buzzer sounds, then power off, change fault SPD module to new one is fine.