

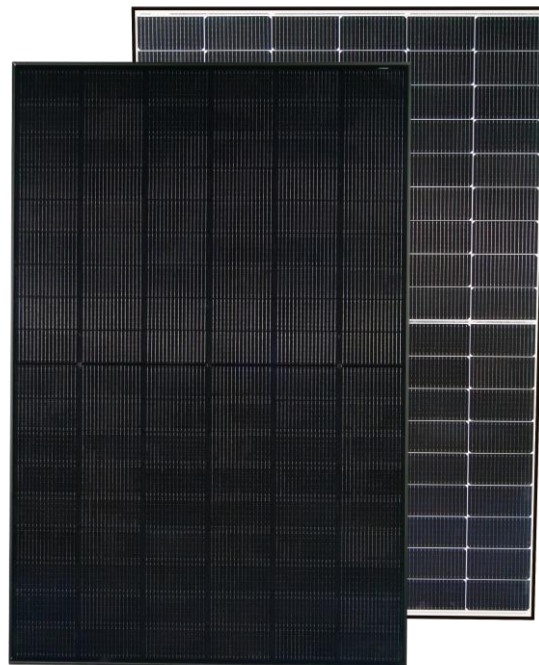
SynMax ¹ 54HS 400~415 Watt

MONO-FACIAL MODULE

P-Type

0~+3% Positive power tolerance

SynMax-1 54HS mono crystalline silicon solar module, which is particularly designed for rooftops, makes installation much easier. Meanwhile, its extraordinarily high efficiency enables you to install as many as you can in a limited area.



21.3%
Max Efficiency

25 Years
Power Warranty

Key Features



Multi-busbar Technology

Multi-busbar helps to trap more light and electricity



Light design

Light design for rooftop particularly



Less Hot Spot Risk

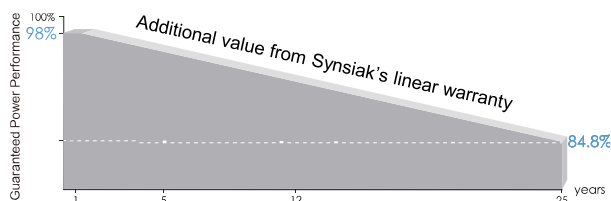
Half-cut technology reduces inner loss and hot spot risk



Better LCOE

Excellent performance brings better LCOE

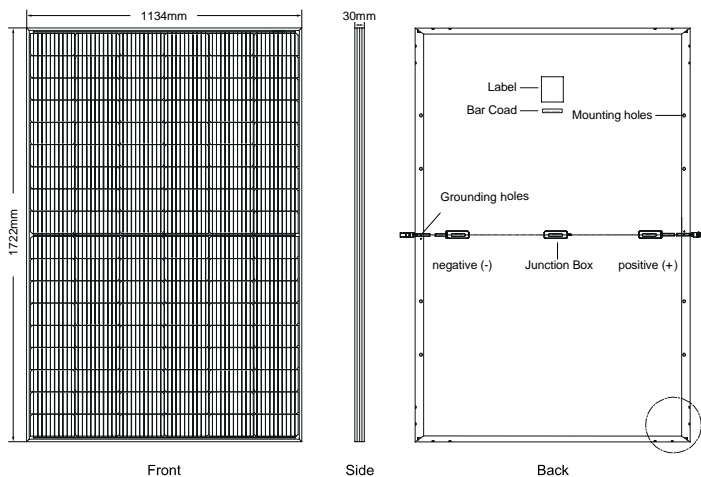
Linear Performance Warranty



12 Years Product Warranty

25 Years Linear Power Warranty

0.55% Annual Degradation



MECHANICAL CHARACTERISTICS

Cell Type	P type Mono-crystalline 182x91mm
No. of Cells	108 cells
Dimensions	1722(±2)×1134(±2)×30(±1)mm
Weight	21.4kg±3%
Front Glass	3.2mm, Anti-Reflection Coating, High Transmission, Low Iron, Tempered Glass
Frame	Anodized Aluminum Alloy
Max Static Loading	5400Pa(front)/2400Pa(rear)
Junction Box	IP68 Rated
Output Cables	4.0 mm2, cable length: 1200 mm or Customized Length

PACKAGING CONFIGURATION

(Two pallets = One stack)

36pcs/pallets, 72pcs/stack, 936pcs/ 40'HQ Container

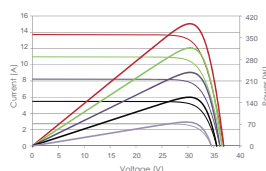
SPECIFICATIONS

Module Type	SK2-M54HS-400	SK2-M54HS-405	SK2-M54HS-410	SK2-M54HS-415
Maximum Power (Pmax/W)	400	405	410	415
Maximum Power Voltage (Vmp/V)	31.20	31.40	31.60	31.80
Maximum Power Current (Imp/A)	12.83	12.90	12.98	13.06
Open-circuit Voltage (Voc/V)	37.10	37.30	37.50	37.70
Short-circuit Current (Isc/A)	13.73	13.81	13.88	13.96
Module Efficiency STC (%)	20.5	20.7	21.0	21.3
Operating Temperature	-40°C~+85°C			
Maximum System Voltage	1500VDC			
Maximum Series Fuse Rating	25A			
Power Tolerance	0~+3%			
STC	Irradiance 1000W/M2, cell temperature 25°C, AM 1.5			

TEMPERATURE RATINGS

Temperature Coefficient of Pmax	-0.35%/°C
Temperature Coefficient of Voc	-0.275%/°C
Temperature Coefficient of Isc	+0.045%/°C
Nominal Operating Cell Temperature (NOCT)	45±2°C

Current-Voltage & Power-Voltage Curve (405W)



Temperature Dependence of I_{sc} , V_{oc} , P_{max}

